

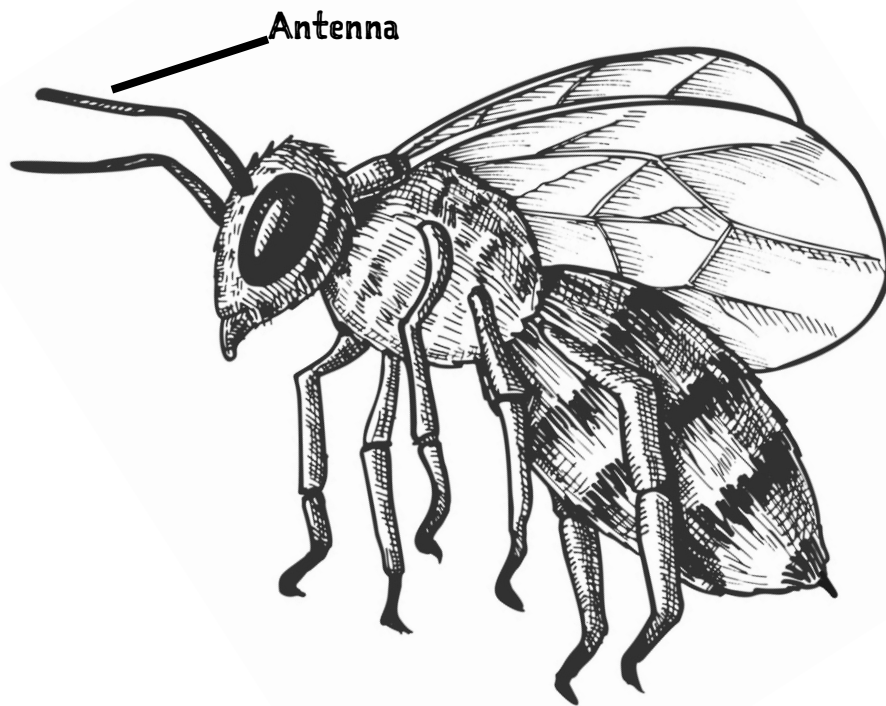
The Honey Bee Herald

K TO 2ND GRADE ACTIVITY NEWSLETTER

DID YOU KNOW THAT THE FIRST BEE FLEW ALONG SIDE DINOSAURS ALMOST **130** MILLION YEARS AGO? THE FLOWERS LOOKED DIFFERENT AND SO DID THE BEES BUT THAT IS WHERE THEIR STORY BEGINS.

Anatomy of a Bee

Draw a line to each part and label it using the word bank.



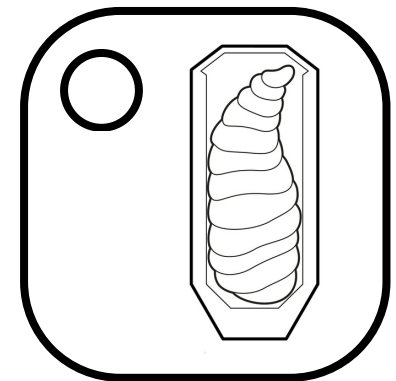
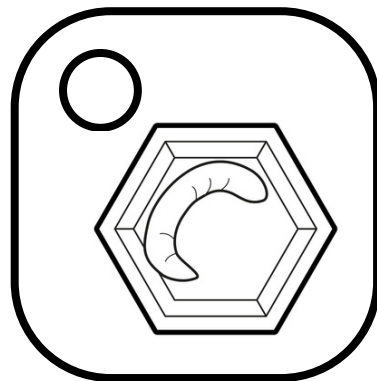
Head
Mouth
Antenna
Wings
Legs
Thorax
Stinger
Abdomen
Eyes

Build A Bee

Now that you can correctly identify the parts of a honey bee, use your understanding to create a representation of a honey bee. Gather craft items like pom-poms, feathers, pipe cleaners, paper, toothpicks, etc. from around your home. You can also use materials found outside in nature like leaves, pinecones, pine needles, twigs, bark, flowers, acorns, etc. Choose items that will represent the specific body parts that have been discussed and let your imagination take over to build your honey bee. With the help of an adult, use a hot glue gun to glue your honey bee together. After you have built your honey bee, explain to someone else why you chose specific items to represent the honey bee body parts.

Life Cycles Stages

Place the stages of the honey bee life cycle in order by writing 1, 2, 3, or 4 inside the small circle in each picture.





FLORIDA
Agriculture
IN THE CLASSROOM

Honey Bee Word Search

COCOON	DRONE	POLLEN
HONEY	COLONY	PUPA
LIFE CYCLE	ADULT	LARVA
ROYAL JELLY	HIVE	WORKER
NECTAR	EGG	QUEEN

Know the Lingo!

Write a sentence using 3 of the words you learned from the list above.

BEE-NOCULARS

Activity Courtesy of UF/IFAS Honey Bee Research and Extension Laboratory

In this activity you will make a gadget, or tool, that gives you a glimpse of what it might be like to see the world through a mosaic lens. You can do this activity on your own or with a group of friends.



Step 1. Collect the following materials for this activity:

- paper cup
- black tempera paint
- scissors
- paintbrush
- sharp pencil
- green permanent marker
- clear packing tape

Step 2. Using black paint, coat the entire inside of a paper cup. While you are waiting for the paint to dry, work on the crossword puzzle activity.



Step 3. Once the paint has completely dried, flip the cup over and use the sharpened pencil to poke holes in the bottom of the cup until it is completely covered.

Step 4. Use clear packing tape to cover all the holes on the outside of the bottom of the cup.

Step 5. Using the green permanent marker, color all the tape on the bottom to cover the holes with green.

Step 6. When finished, hold the open part of the cup up to your eye and look out of the other end. Go outside and look at flowers, trees, buildings, and cars first without the Bee-noculars and then with them. Notice any difference?

J T N X E R R Z X V F T U Y Y B Y Q Q G N I X K
 Y H L V M B O J M Z C B M D N Y N A M N Z P Y U
 L P L A E V Y Y W F T A B J B C O C O O N A O G
 Z Q P F R J W A A E T S T J U R F U F C R F R K
 K J J Q C V P H A L J E Z J C A P H F A Q I R E
 X D C K C L A J P P J Y U E X T C M S X U A G R
 D H H J B N I Y P R I E Q A S Q J X S N E G M Z
 K S O D L T B I I E K H L C N J D G T E E T U P
 P Q N C V K W L L E E Z A L Z O W O Z W N L D V
 Z L E U J B J C V K L J V N Y E D E O H T U F G
 J P Y H V G Y N M M V P H C B O W R E Q V D N N
 R A B I R C P D O E J C W F U P K P H D R A E V
 M K Z F E X E L F E N R O E J E V R D I Y C K J
 A G L F E X S W Q V Y Y F B R D M C C R T Z W J
 I R I N S X E O E K W K A Q X R E D F A L H Q Q
 M L O B M G F H O C J U O S V O H V R W D H P I
 P I F Y H S M H O J T A F P R N I B T H D L F E
 U K Z R A U V L B G J Y M A Z E L U F M X U X U
 H H F Y T J O D G E P P D A O U N A A S O I W W
 J I W F L N K O S J U K D P D X C A B N F Q J E
 O V P N Y A S X G P D P O L L E N R S F M Z V G
 T E P G K H X Q A R W A J Z R D H P X B F N I S
 E T M G W Q X W N I G K U X K F R R Y L H R W S
 I W K U S J A W O W J D H W Y V E E A O L E S W

Pictures by Megan Hammond, UF/IFAS Honey Bee Research and Extension Laboratory