

The Chicken Chronicle

3RD TO 5TH GRADE ACTIVITY NEWSLETTER

Chickens are thought to have come from wild fowl found in Southeast Asia; however, today chickens are raised on farms for their meat and eggs. There are over 113 different breeds. Raising chickens for eggs, meat or as a hobby is not new, chickens were raised by people beginning over 4,000 years ago.

WORD SEARCH

V I F D E G G T O O T H Y B S
Q H L D Q D C H E N S T Y W C
Y W A F H A H T K L K B X E O
F M Y D X D I S D V J R F X J
O D E K A D C C Q Y S O U X W
W A R F S F K Z D W B I W O S
L D I P U L L E T C X L N T R
P O U L T R Y S X V J E N N Z
C O K A M W V W T N Z R L Q Z
R S R A C N R O O S T E R I D
G B D O M E S T I C A T E D P
C O C K E R E L F S T P N K Z
J D B W F R Y E M R X F H F Z
E E H F K Y I B R E E D Y T Z
E L D X D J B J D E E T G D R

Which came first, the chicken or the egg?

Brainstorm for a few minutes and answer the age old question above.

I think the _____ came first.

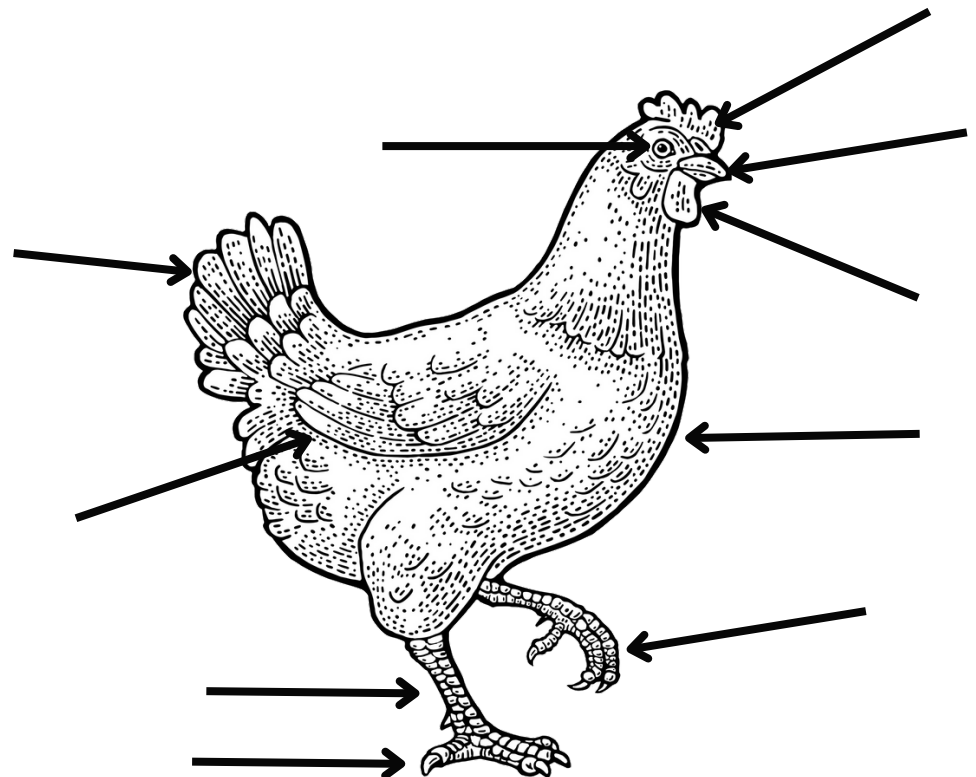
1. State what you believe and give a specific reason for your belief.
2. Defend your reason against the opposite view.
3. Restate your belief and your strongest reason for this belief.

Word Bank

- Breed— a certain type of animals defined by their appearance
- Broiler— a chicken raised for meat
- Chick— a newly hatched bird
- Cockerel— a young rooster
- Domesticated— tame and kept as a pet or on a farm
- Egg tooth— a toothlike growth on the beaks of birds
- Fowl— a bird raised for eggs and meet
- Hen— an adult female chicken
- Layer— a chicken raised for egg production
- Poultry— domesticated fowl
- Pullet— a young hen
- Rooster— an adult male chicken

Label the Parts of a Chicken

beak, wing, tail, wattles, toes, comb, shank, breast, eye, claw



Life Cycle of A Chicken

1. The egg grows in the hen, a female chicken. When the egg is ready the hen will lay the egg in her nest.
2. The hen will then sit on her eggs to keep them warm. The hen will turn the eggs over 50 times during the day to make sure the chick does not stick to the side of the egg. Inside of the egg the chick will begin to grow its body, legs and head.
3. After 21 days the chicks have fully developed and will begin to hatch. They will begin to peck through the shell with their egg tooth.
4. The chick will be wet when it hatches and will then dry off and the feathers will be fluffy.
5. If the chick is a female it is called a pullet and if the chick is a male it is called a cockerel.
6. As the pullet grows up it will then become a hen and the cockerel will become a rooster. The hen will then be able to grow eggs of her own and the cycle will begin again.

Create your own chicken life cycle! Draw a picture to represent the stages of the life cycle.

1	2	3	4	5	6
---	---	---	---	---	---

Make Your Own Egg Candler

Materials:

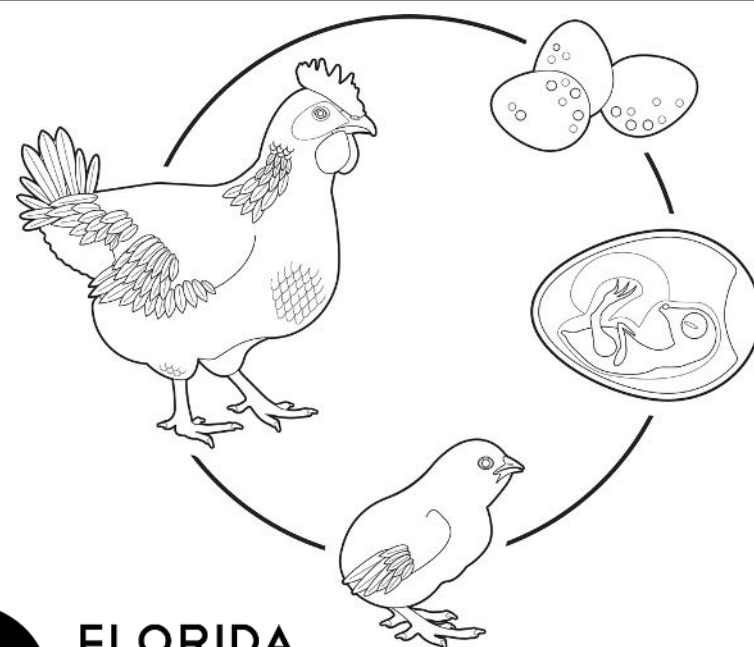
- Small LED Flashlight
- Dark colored Play-Doh

Instructions:

1. Take the Play-Doh and form an egg sized cone around the top of the flashlight.
2. Place the egg in the cone in a dark room and this will allow you to see the chick's development!

Pro Tips:

- Make sure the eggs are clean
- Don't candle daily
- Don't keep the eggs outside of the incubator for more than 30 minutes
- Darker eggs are harder to see through



FLORIDA
Agriculture
IN THE CLASSROOM